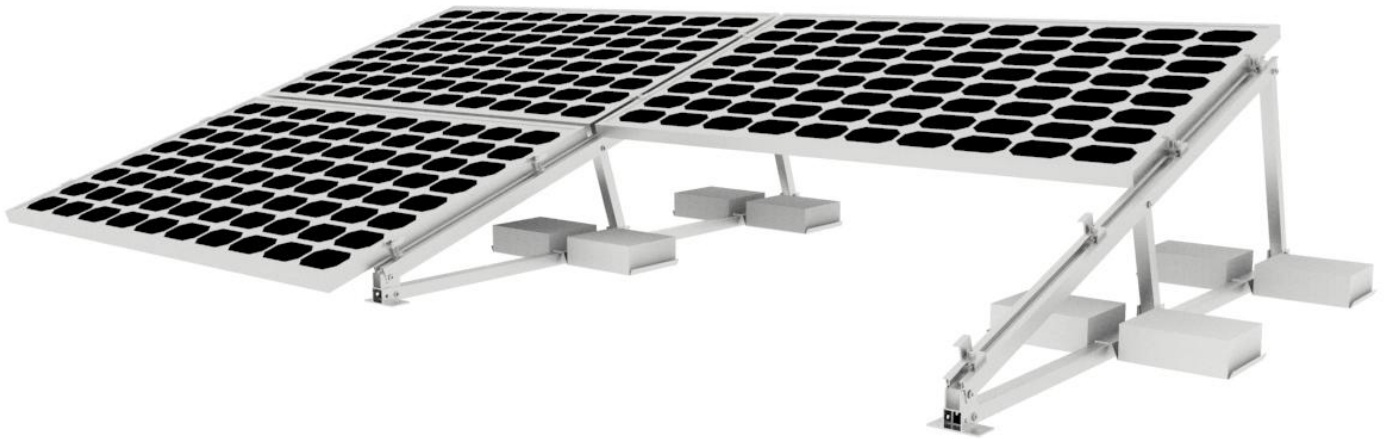


Flat Roof Mount System IV (Two Rows)



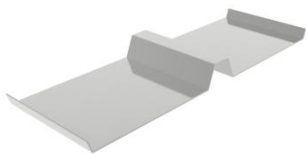
Features & Benefits

- a) Non-Penetrating to roof
- b) Pre-assembled parts for simple and fast installation
- c) Rail-less
- d) Hardware included
- e) Customized request can be accepted

Technical Information:

- Installation Site: Flat Roof
- Module Orientation: Landscape
- Material: Aluminum 6005-T5
- Max Wind Speed: <60 m/s
- Max Snow Load: <1.4 KN/M2
- Tilt Angle: 5° ~ 30°
- Warranties: 12 Years

Components List



Ballasted Plate



Mid Clamp

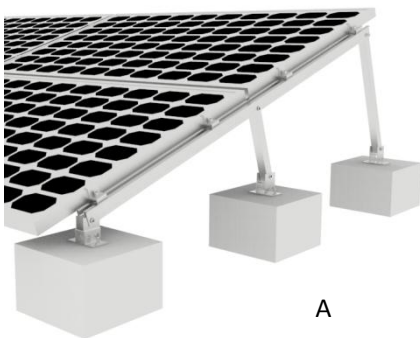


End Clamp

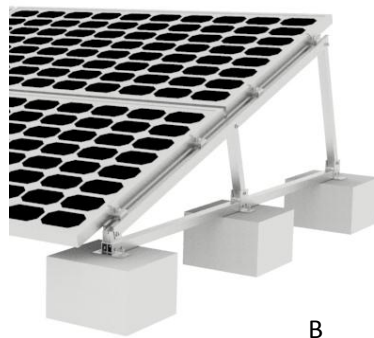


Pre-assembled Flat Roof Mount

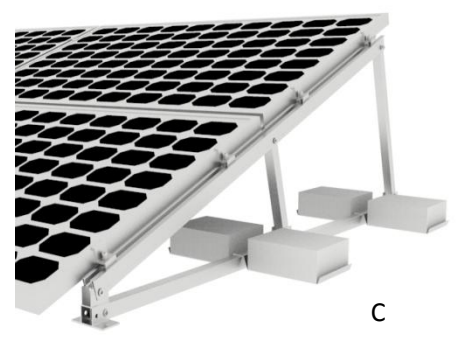
Application Type



A



B



C